

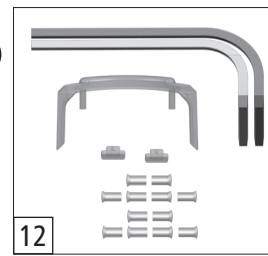
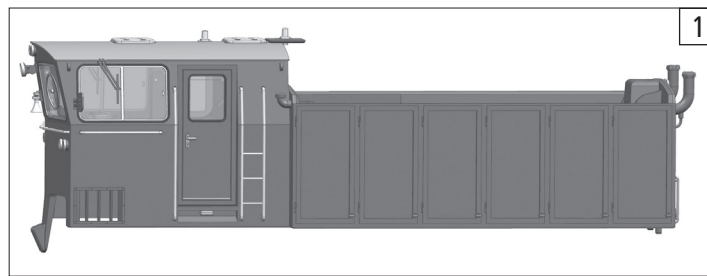
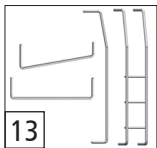
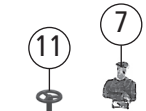
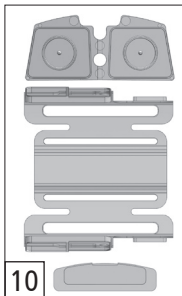
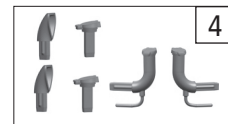
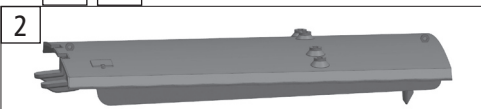
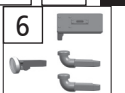
72809

JBV

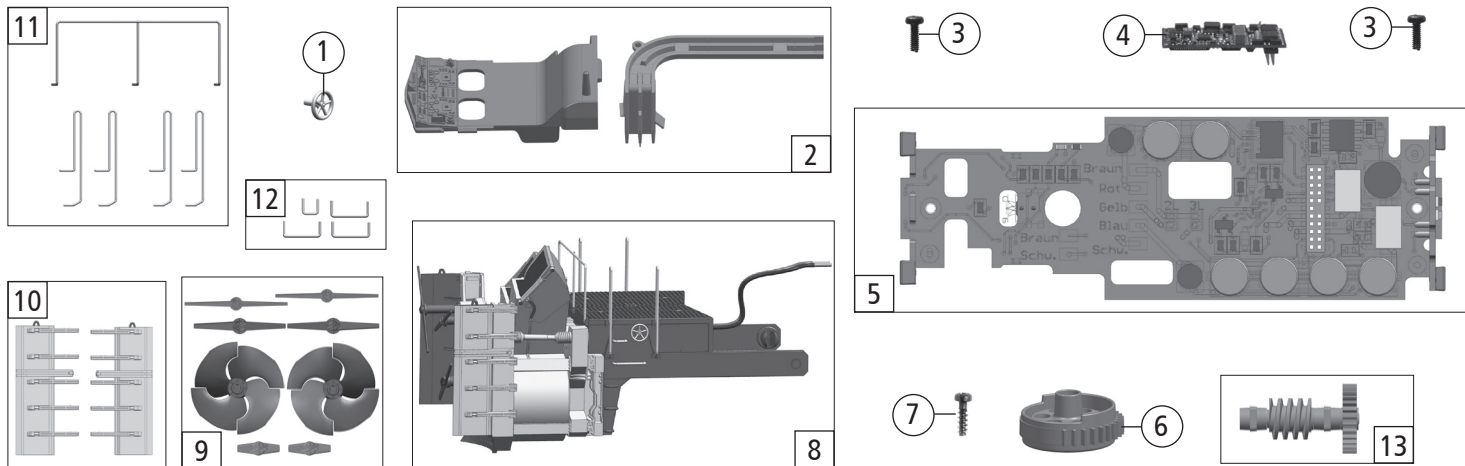
Schneeschleuder



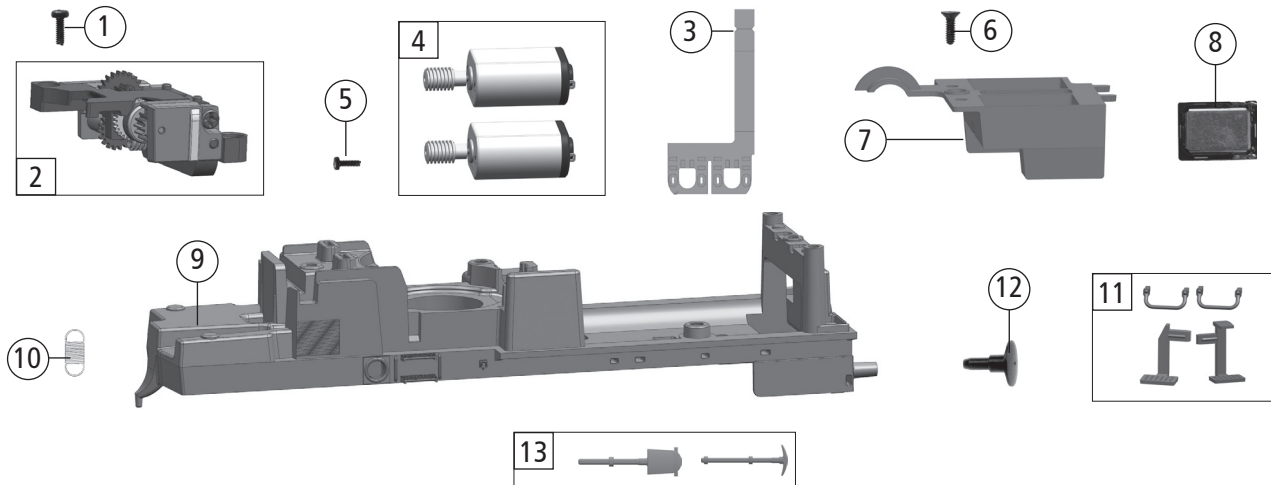
78809



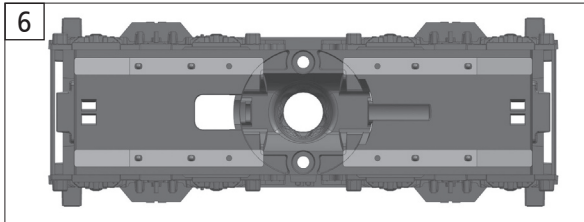
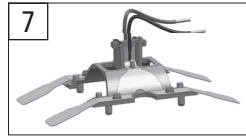
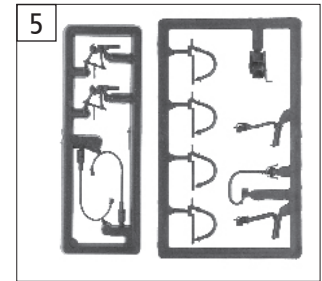
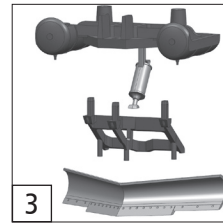
Pos. Nr. Pos.no. Position Posizione	Beschreibung Description Désignation Descrizione	Art.-Nr. Art.no. Réf. Art.no.	Preisgruppe Price bracket Catég. de pr. Prezzo Gruppo
1	Gehäuse kpl. Betr. Nr. DIR 3-5013/ Body ass. / Boîtier complet DIR 3-5013 / Boîtier complet DIR 3-5013 / Scatola DIR 3-5013	139782	37
2	Dach lackiert m. Hebeösen / Painted roof with lifting lugs / Toit laqué avec anneaux de levage / Tetto verniciato con occhielli	139781	14
3	Hebeöse / Lifting lug / Anneau de levage / Occhielli	139783	8
4	TS - Auspuff / Parts set - Exhaust / Kit de pièces - échappement / Kit componenti - scappamento	135058	6
5	Antenne, Hupe / Antenna, horn / Antenne, klaxon / Antenna, corno	139785	7
6	TS - Gehäuse / Parts set body / Kit de pièces - boîtier / Kit componenti - cassa	139786	10
7	E-Lokführer / E-train driver / Conducteur électronique / Macchinista per locomotive elettriche arancio	89732	6
8	Stirnlichtring / Rear headlight ring / Anneau lumière avant / Anello illuminazione di testa	135068	5
9	TS - Scheibenwischer u. Rückspiegel / Window wiper and rear-view mirror / Essuie-glace et rétroviseur / Tergicristalli e specchietto retrovisore	135065	19
10	TS - Fenster / Parts set - Window / Kit de pièces - fenêtrre / Kit componenti - finestre	139784	12
11	Handrad Führerstand / Driver stand hand wheel / Volant cabine / Volano cabina di guida	135061	3
12	Lichtleiter / Light conductor / Conduit de lumière / Conduttore di luce	135051	9
13	TS - Griffstangen / Parts set – Handle bars / Kit de pièces – leviers de commande / Kit componenti – leve di comando	139787	15
14	Griffstange hinten / Rear handlebar / Levier de commande arrière / Leva di comando posteriore	135067	5
15	GF-Schraube M1,6x4 / GF-screw M1,6x4 / GF-Vis M1, 6x4 / GF-Vite M1,6x4	114850	3
16	TS-Scheibenwischer hinten / Part set Window wiper rear / Jeu de essuie-glace arrière / Kit componenti tergilunotto	139788	10



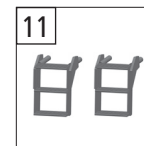
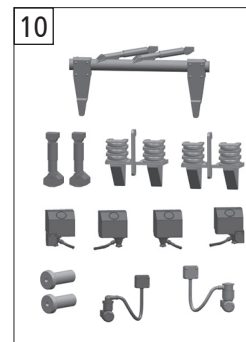
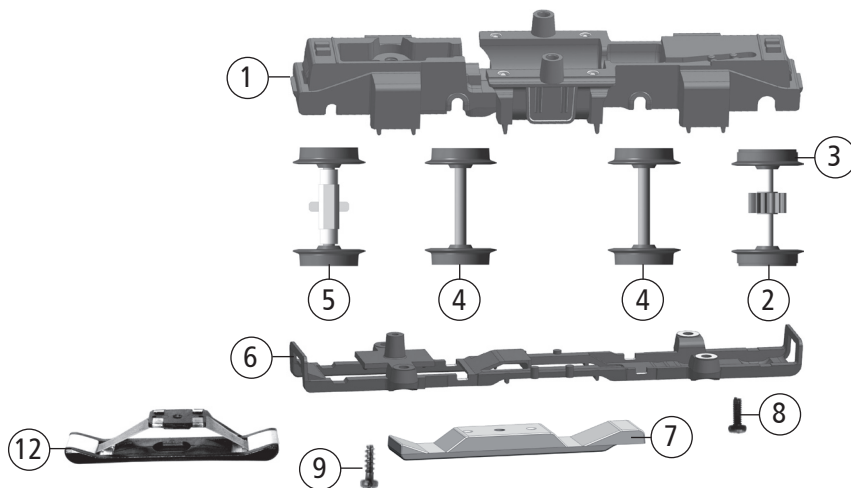
Pos. Nr. Pos.no. Position Posizione	Beschreibung Description Désignation Descrizione	Art.-Nr. Art.no. Réf. Art.no.	Preisgruppe Price bracket Catég. de pr. Prezzo Gruppo
1	Handrad / Hand wheel / Volant / Volano	139774	3
2	TS - Führerstand / Parts set – Driver stand / Kit de piçces – cabine / Kit componenti – cabina di guida	135060	9
3	GF-Schraube M1,6x4 / GF-screw M1,6x4 / GF-Vis M1, 6x4 / GF-Vite M1,6x4	114850	3
4	Sounddecoder 22 Plux / Sound plug decoder - 22 Plux / Décodeur son ř enficher - 22 Plux / Decoder sonoro ad innesto - 22 Plux	129000	39
5	Platine kpl. / Circuit board, complete / Platine complçte / Piastrina completa	137388	34
6	Zahnkranz / Sprocket / Couronne dentée / Corona	135037	4
7	Schraube 1,5x5 / Screw 1,5x5 / Vis 1,5x5 / Vite 1,5x5	108137	3
8	Vorbau kpl. / Front end, complete / Avant complet / Avantreno completo	139773	36
9	TS - Vorbau / Parts set – Front end / Kit de piçces – avant / Kit componenti – avantreno	139775	9
10	TS - Schaufelblech li. u. re. / Shovel panel left and right / Tôle d'aube ř droite et ř gauche / Kit componenti – lamiera pala a destra a sinistra	139779	15
11	TS - Griffe u. Geländer / Parts set - Handles and rails / Kit de piçces – poignée et rambarde / Kit componenti – maniglie e ringhiera	139777	15
12	TS - Tritte / Parts set - Steps / Kit de piçces – marches / Kit componenti – predellini	139776	10
13	Schneckensatz kpl. / Worm set, complete / Jeu de vis sans fin complet / Serie completa di viti senza fine	135045	10



Pos. Nr. Pos.no. Position Posizione	Beschreibung Description Désignation Descrizione	Art.-Nr. Art.no. Réf. Art.no.	Preisgruppe Price bracket Catég. de pr. Prezzo Gruppo
1	GF-Schraube M2x5 / GF-screw M2x5 / GF-Vis M2x5 / GF-Vite M2x5	114966	3
2	Getriebe kpl. o. Motoren / Transmission, complete without motors / Entraînement complet sans moteurs / Riduttore completo, senza motore	135046	24
3	Flexleiter Doppelgetriebe / Twin transmission flex conductor / Conduit flexible double entraînement / Conduttore flessibile biriduttore	135047	12
4	Motoren für Doppelgetrieb / Motors for twin transmission / Kit de pièces – moteurs pour double entraînement / Kit componenti – motori per biriduttori	135048	19
5	Schraube M1,4x4 / Screw M1.4x4 / Vis M1, 4x4 / Viti M1,4x4	127203	3
6	SK-Schraube M1,6x4 / SK-screw M1.6x4 / SK-Vis M1, 6x4 / SK-Vite M1,6x4	115161	3
7	Lautsprecherbox / Loudspeaker box / Haut-parleur / Box altoparlante	135049	6
8	Lautsprecher / Loudspeaker / Haut-parleur / Altoparlante	129524	16
9	Rahmen lackiert u. bedruckt / Frame, painted and printed / Cadre laqué et imprimé / Telaio verniciato e laccato	139780	17
10	Zugfeder / Spring / Tension / Tensione	86208	3
11	Rangiergriff u. -tritte / Shunting handle and steps / Poignée et marche de manoeuvre / Kit componenti - maniglie e predellini per manovre	135050	6
12	Puffer / Buffer / Amortisseur rond et voûté – métal / Respingente rotondo, bombato – metallo	88503	5
13	Hacke u. Schaufel / Pick and shovel / Pioche et pelle / Zappa e pala	139778	11



Pos. Nr. Pos.no. Position Posizione	Beschreibung Description Désignation Descrizione	Art.-Nr. Art.no. Réf. Art.no.	Preisgruppe Price bracket Catég. de pr. Prezzo Gruppo
1	GF-Schraube M1,6x4 / GF-screw M1,6x4 / GF-Vis M1, 6x4 / GF-Vite M1,6x4	114850	3
2	Antriebsatz / Drive kit / Conduire kit / Set di alimentazione	135276	9
3	TS - Schneepflug / Parts set – Snowplough / Kit de pièces – chasse-neige / Kit componenti – spartineve	135053	6
4	GF-Schraube M2x5 / GF-screw M2x5 / GF-Vis M2x5 / GF-Vite M2x5	114966	3
5	Teilesatz / Part set / Ensemble de pièces / Set di parti	108322	7
6	Drehgestellblende m. Kontakte / Bogie frame with contacts / Cadre bâti tournant avec contacts / Carrello con contatti	139771	20
7	Kontakthalter kpl. / Contact holder, complete / Support de contact complet / Supporto contatto completo	135033	13
8	Motor / Motor / Moteur / Motore	135034	28
9	Getriebeeinsatz / Transmission insert / Treuil / Insetto riduttore	135030	8
10	Zahnrad Z=14 - rot / Gear Z=14 / Pignon Z=14 / Ruota dentata Z=14	86480	3
11	Zahnrad Z=20/10 M=0.3/0.4 / Gear Z=20/10 / Pignon Z=20/10 M=0.3/0.4 / Ruota dentata Z=20/10 M=0.3/0.4	86462	8
12	Zahnrad Z=16 - schwarz / Gear Z=16 / Pignon Z=16 / Ruota dentata Z=16	117617	3



Pos. Nr. Pos.no. Position Posizione	Beschreibung Description Désignation Descrizione	Art.-Nr. Art.no. Réf. Art.no.	Preisgruppe Price bracket Catég. de pr. Prezzo Gruppo
1	Fahrgestell lackiert / Painted chassis / Châssis laqué / Telaio verniciato	135029	11
2	Radsatz m. 2Hafr.+Zahn. / Wheel set w. 2 fastening rings+gear / Train de roues a. 2rondelles adh.+pignon / Kit ruota con 2 anelli adesivi	135026	12
3	Hafringe 10,5-13,5 - 10 Stk. / 10.5-13.5 fastening rings - 10 pcs. / Rondelles adhésives 10,5-13,5 - 10 unités. / Anelli adesivi 10,5-13,5 - 10 pezzi	133238	10
4	Radsatz o. Hafr. o. Zahn. / Wheel set without fastening ring or gear / Train de roues sans pignon / Kit ruota senza anello adesivo, senza ruota dentata	135027	10
5	Radsatz m.Pendelachse o.ZR/HR. / Wheel set with swing axle, without gear / Train de roues avec essieu oscillant / Kit ruota con semiasse oscillante	135028	11
6	Getriebefuß / Transmission base / Carter d'entraînement / Fondo riduttore	135035	5
7	DC-Platte / DC board / Plaque DC / Piastra DC	135036	10
8	GF-Schraube M1,6x4 / GF-screw M1,6x4 / GF-Vis M1, 6x4 / GF-Vite M1,6x4	114850	3
9	Schraube 1,5x5 / Screw 1,5x5 / Vis 1,5x5 / Vite 1,5x5	108137	3
10	TS - Drehgestellblende / Parts set - Bogie frame / Kit de piçces - cadre bâti tournant / Kit componenti - carrello	135032	8
11	Treppe / Step / Escaliers / Scala	139772	5
AC-Wechselstrom			
12	Schleifer / Pick-up shoe / Curseur / Rettificatore	86030	14